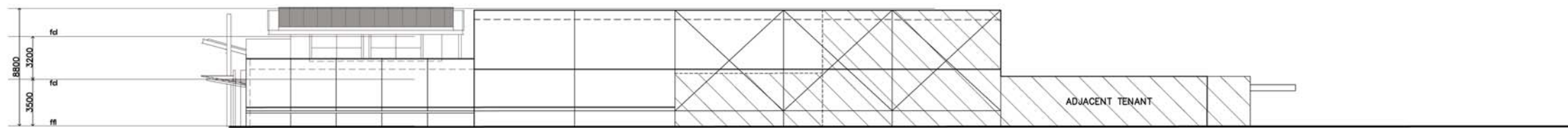


NORTH ELEVATION
PROPOSED



EAST ELEVATION
PROPOSED



SOUTH ELEVATION
PROPOSED



WEST ELEVATION
PROPOSED

ISSUE	DATE	AMENDMENTS	BY
E	13105	GENERAL REVISION	AD
D	7105	GENERAL REVISION	MK
C	4105	GENERAL REVISION	MK
B	2895	GENERAL REVISION	MK

GEOFF DRISCOLL ARCHITECTS PTY LTD

 40 Inkster Street
 Kambah ACT 2902
 ph (02) 6281 4254
 fax (02) 6281 1812
 www.geoffdriscollarchitects.com.au

ALL DIMENSIONS IN MILLIMETRES. DO NOT SCALE DRAWINGS.
 ALL DIMENSIONS AND LEVELS MUST BE VERIFIED ON SITE BY CONTRACTOR BEFORE THE COMMENCEMENT OF ANY WORK OR MAKING ANY SHOP DRAWINGS.

THIS DRAWING TO BE READ IN CONJUNCTION WITH THE SPECIFICATION.

PROJECT TITLE
**WOOLWORTHS SUPERMARKET,
 EXTENSION TO EXISTING
 BUILDING.
 BLOCK 13, SECTION 46
 MAWSON A.C.T.**

CLIENT
ARGOS PTY LTD

DRAWING TITLE
ELEVATIONS

SCALES 1:200@A1 DRAWN MK CHECKED DATE SEPT 2005	PROJECT No. 204761 DRAWING No. A05	ISSUE E
----------------------------------------------------------	----------------------------------------------------	-------------------